



United States Department of Agriculture

Rural Development



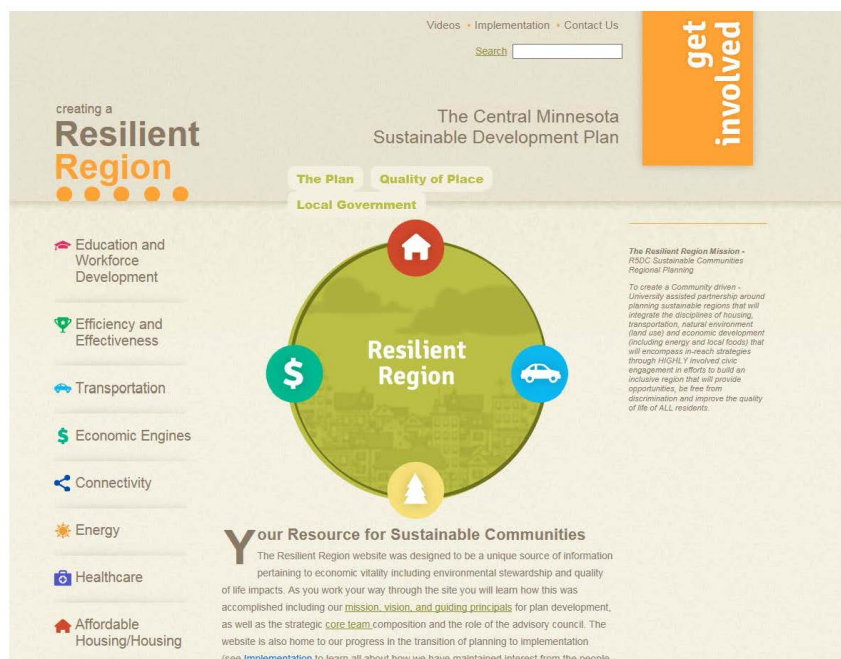
NACo Rural Action Caucus



Crossing Lines: Building relationships on a national level



Relationships Lead to Innovation & Collaboration



- How “we” consider “we”
- How we “see” our region
- How we “consider” our options
- How we support the “connectors”

“Strong rural communities are key to a stronger America...that’s why I’ve established the White House Rural Council to make sure we’re working across government to strengthen rural communities and promote economic growth.”

- President Barack Obama

White House Rural Council (WHRC)

- Three core functions
- Emphasis on job creation and economic development in four key areas.
- HUD Sustainable Communities
- Local Foods, Local Places Initiative
- *The POWER+ Plan*



The Collective Impact



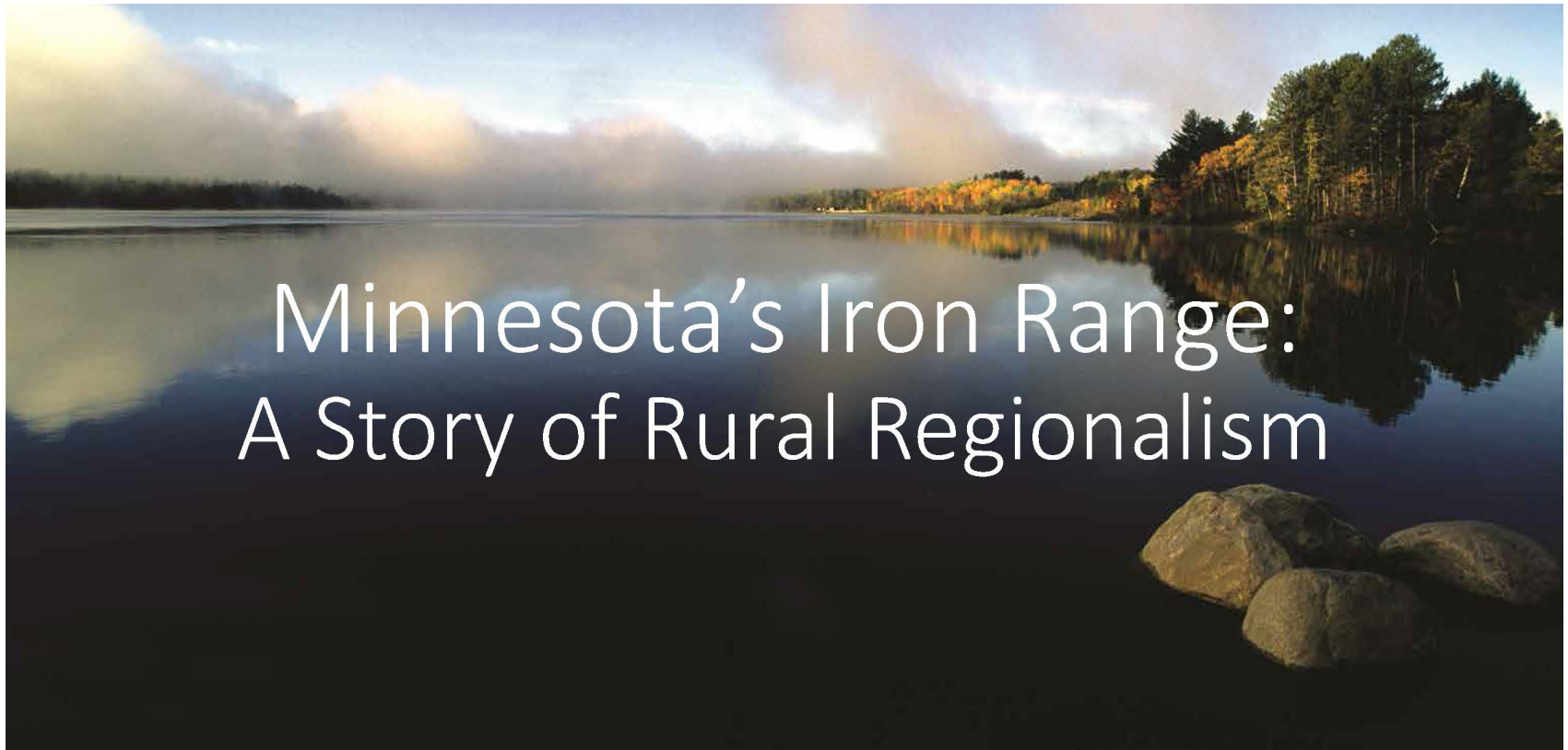
Providing a Framework for Regional Innovation



Critical Internal Considerations

- Wealth Creation, Intergenerational Wealth Retention, and Appropriate Wealth Distribution
- Youth Engagement, Retention, and Leadership Development
- Social Inclusion and Social Equity Considerations
- Specific Attention to Social Mobility and Inequality

Iron Range Rehabilitation Resources Board (IRRRB)



IRRRB

MDN continuing coverage planned

page A3

High: 65
Low: 40

WEATHER
Up North
5 day forecast
A2

MESABI DAILY NEWS

Virginia, Minnesota
NEWSPAPER OF THE IRON RANGE
www.virginiamn.com

50¢

The news of LTV's decision Wednesday quickly reached the Steelworkers Local 4108 union hall and barber shops, eateries, bars and stores everywhere. Residents and others said they were shocked, dismayed and dumbfounded at ...

LTV CLOSING DOWN

1,400 jobs to be lost within year; announcement stuns workers

By JEFF BAIRD
Staff Writer

DULUTH — LTV Steel, the second largest employer on the Iron Range with 1,400 workers, will cease operation of its Hoyt Lakes plant by summer of 2001, company officials said Wednesday.

The impact for employees will be felt as early as August with 120 employees being permanently laid off.

However, stripping operations will end effective Sunday, according to LTV Steel president Richard Hippie.

"The bottom line is it (the mine) reached the end of its economic life," Mark Tumach, spokesman for LTV Steel, said from a news conference in Duluth. "The ore body is worked up."

However, Cleveland Cliffs Inc., LTV's managing agent, did not close the door to the

Polymet inches ahead on project

By JEFF BAIRD
Staff Writer

BABBITT — So far, so good for the NorthMet non-ferrous mining project near Babbitt.

Colorado-based Polymet mining confirmed Monday that NorthMet has mineral concentrations adequate to be mined commercially — which, according to Don

Please see POLYMET A10

Union reacts in shock

By LINDA TYSSSEN
Staff Writer

AURORA — Jerry Fallos is feeling homeless.

And it's a feeling probably shared by the 1,400 workers who got the news Wednesday that LTV Steel Mining Co. is permanently closing down at Hoyt Lakes.

"People put 30, 35 years in a place and all of a sudden it's gone," said Fallos, the president of Steelworkers Local 4108 representing hourly employees at LTV. There might be occasional differences between workers, he said, but the LTV crew is one big family.

"It's like getting kicked out of your own house," Fallos said at the Union Hall in Aurora Wednesday morning, just hours after the news detonated and spread like blasting fallout

Please see UNION A10

LTV president: Ore, old furnaces led to decision

By PAT FAHERTY
Duluth Budgeteer News

DULUTH — LTV President Richard J. Hippie made it clear that poor quality ore and obsolete equipment are being blamed, though corporate offi-

But their efforts weren't enough, and the decision which had been brewing for some time was announced Wednesday morning at the

Steelworkers Local 4108 President Jerry Fallos discusses the union's reaction to LTV's announcement of the closing of the LTV Steel Mining Company at the Union Hall in Aurora Wednesday morning.

Photo by Mark Sauer

LTV STEEL MINING CO.
Hoyt Lakes, Minn.

Opened in 1957 as Erie Mining

HOYT LAKES

Mayor: 'The news is

IRRRB

Reserve suspends operations Fallout of LTV action hits the Iron Range

By LINDA TYSEN
News Editor

Reserve Mining Co. at Bobbitt and Silver Bay shut down until further notice late Monday in the wake of financial problems of one of its parent companies, and according to a top union official, Reserve is in deeper trouble than any other taconite mining operation in northeastern Minnesota, with its parent company close to bankruptcy.

The shutdown follows LTV's announcement late last week that it had filed for protection under Chapter 11 of federal bankruptcy laws. LTV owns 50 percent of

Reserve's second parent company, Armco, is close to bankruptcy, according to Eldon Rirsch, director of District 33 of United Steelworkers of America, placing Reserve in an even more difficult situation. Armco files for bankruptcy, it could create a domino effect, forcing other big steel companies to do the same, he said.

More bad news came late last week for retired workers at Erie Mining Co. in Hoyt Lakes, which is owned entirely by LTV. Medical insurance benefits have been cut off. Steelworkers union officials met in Aurora Monday to discuss the problem. The union has three other LTV employees here.

Many of the medical people going to get the On 190.

off the job of Reserve plants to go home and not return until further notice. Some 800 Reserve workers, originally scheduled to return to work Monday following a shutdown, don't will have jobs or not been kept on dur-

THE FRIDAY

MESABI DAILY NEWS

VIRGINIA, MINNESOTA, AUGUST 8, 1985

The Range's
Newspaper

35c

Reserve files under Chapter 11



By LINDA TYSEN
News Editor

BABBITT — Gov. Rudy Perpich came to Babbitt Thursday to reassure the people whose lives were changed the day Reserve Mining Co. shut down. He told them state officials would do all workers back on

afternoon was of Reserve mines and their yant Center ed news that more uncertain Reserve Min-

Shortly after Perpich finished speaking, the phone call came from an Armco official. Perpich stepped to the microphone and gave the news, sending a hush through the crowd. "They will go Chapter 11," he said. "They want to continue to work together with us."

Perpich told the crowd the news was better than it might have been. "They could have gone Chapter 7 — liquidation. If they were going to close, they would have gone Chapter 7 — a total wash-out," Perpich said, trying to reassure the audience.

Officials from Armco, Inc., headquartered in New Jersey, today made their official announcement that its wholly owned subsidiary First Taconite Co. has filed the petition to place the Reserve Mining Partnership in bankruptcy.

The filing was made in U.S. bankruptcy court for the southern district of New York. First Taconite and a subsidiary of LTV Corp., Republic-Reserve Inc., each hold a 50 percent interest in the properties and assets of Reserve Mining.

Last month, LTV and Republic-Reserve filed for reorganization under the bankruptcy code. Armco officials said that while the Reserve Mining Co. filing was regrettable, LTV's decision to seek protection under Chapter 11

Please see • Reserve/ Page 10

Iron Range families face uncertain future Workers skeptical of company officials



By LINDA TYSEN
News Editor

BABBITT — Retired Reserve miner Clarence Maness hasn't been happy the last couple of weeks.

He compares LTV Steel's pulling out of Reserve Mining Co. to teenagers at a beer blast. The police go in and all the kids have to do is let go of the beer and they're in the clear. All LTV officials had to do was go to court and say they're not responsible for their holdings, Maness said.

Ed Housler isn't very happy either. The Reserve mechanic was on vacation in Colorado when he read a story about LTV's filing for bankruptcy protection. He said he never expected such news so suddenly, and for the mo-

close to home for Maness, 52, whose wife Nancy has multiple sclerosis and has recently begun to lose the use of her right arm.

Maness took forced retirement from his job as a truck driver. After he had been laid off for two years, the company had the option of offering him long-term employment or retirement. Maness had worked for more than 20 years.

"In a way the retirement was a godsend because of Nancy. I would have had to have someone around all the time (to care for her)," he said. Nancy is in a wheelchair. She and Maness have five children, with son Rick, 15, the youngest. They moved to Babbitt from Grand Rapids in 1962.

About the Reserve shutdown, Nancy said, "It bothers you but what are we going to do?" At first Maness believed he had it made. "No

know how to put it nicely. How can they walk out on a company and then operate another?" "I of federal Maness said, referring to LTV's announcement to increase production at Erie Mining Co. "That doesn't mean they're going to produce that amount. You can't trust them," Maness said he's glad, however, for the people at Erie.

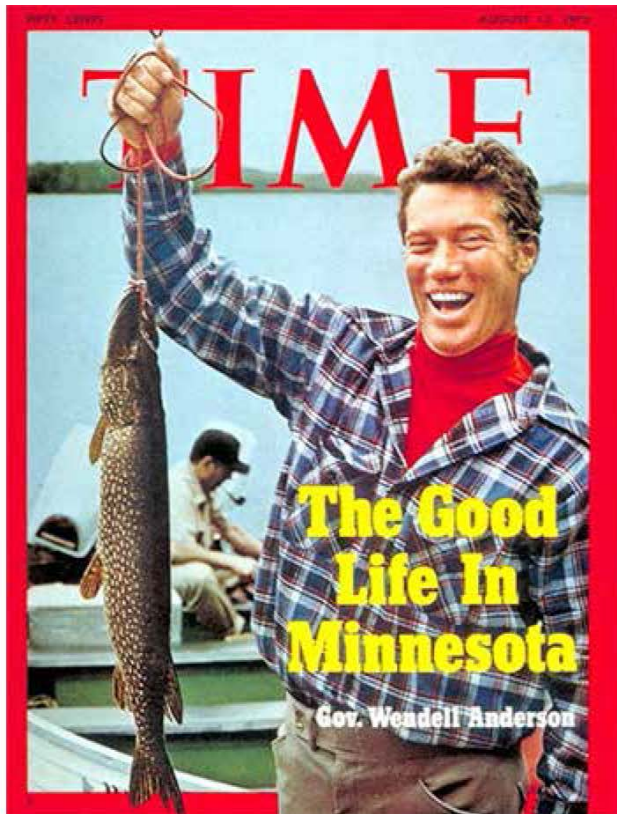
"I'm just sitting back waiting to see what they're going to do. I know that the good Lord is going to provide a way. We've made it this long."

He's convinced that someday the Babbitt area again will be an important source of ore. Imports do hurt the industry, Maness said. "No one will say whose money is behind all of this. How many American steel companies and their backs are overcast? You had better believe they're going to have their fingers in the pie."

IRRRB



IRRRB



The logo features the word "SOAR" in large, bold, green capital letters. Above the letters, a brown eagle with a white head and yellow beak is shown in flight, wings spread. The background of the logo is a light blue and green gradient.

SOAR

Shaping Our Appalachian Region



SOAR

U.S. Representative Hal Rogers & Kentucky Governor Beshear



Facing Unique Kentucky Challenges

- County lines
- Family names
- Friday night lights
- Listening to old tapes
- Stories we tell ourselves

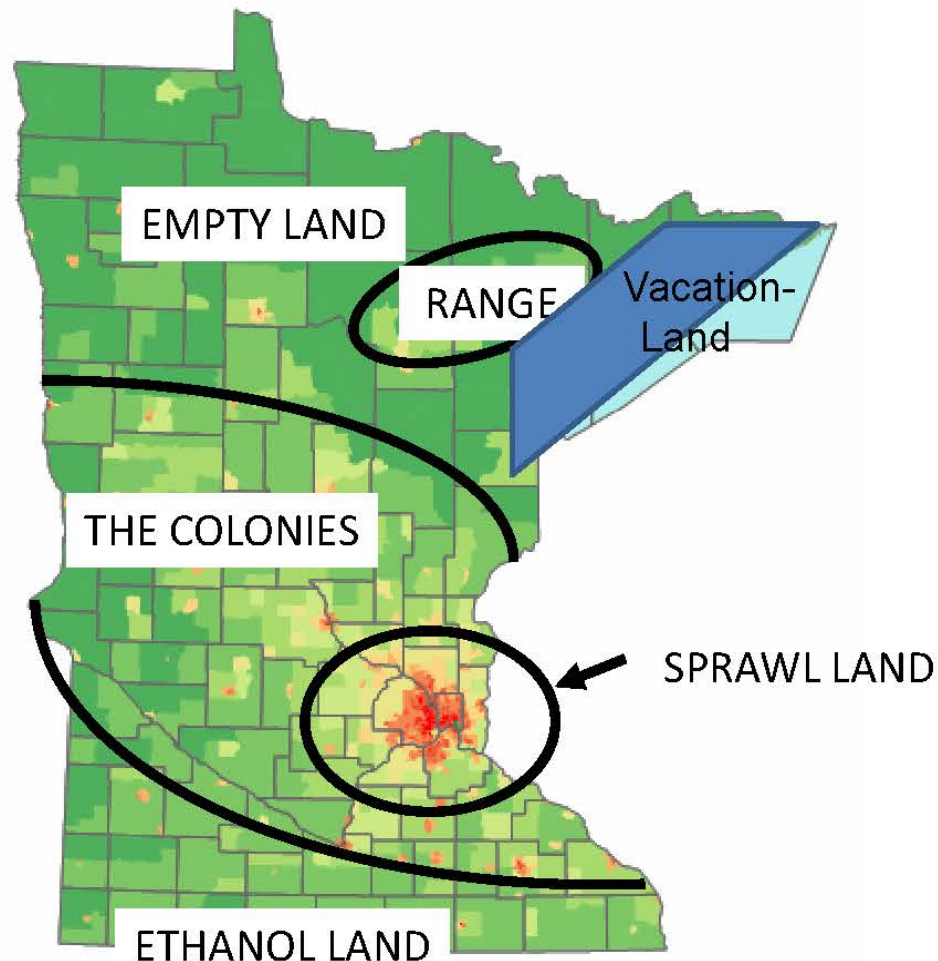


Prioritizing Regional Innovation Ideas That...

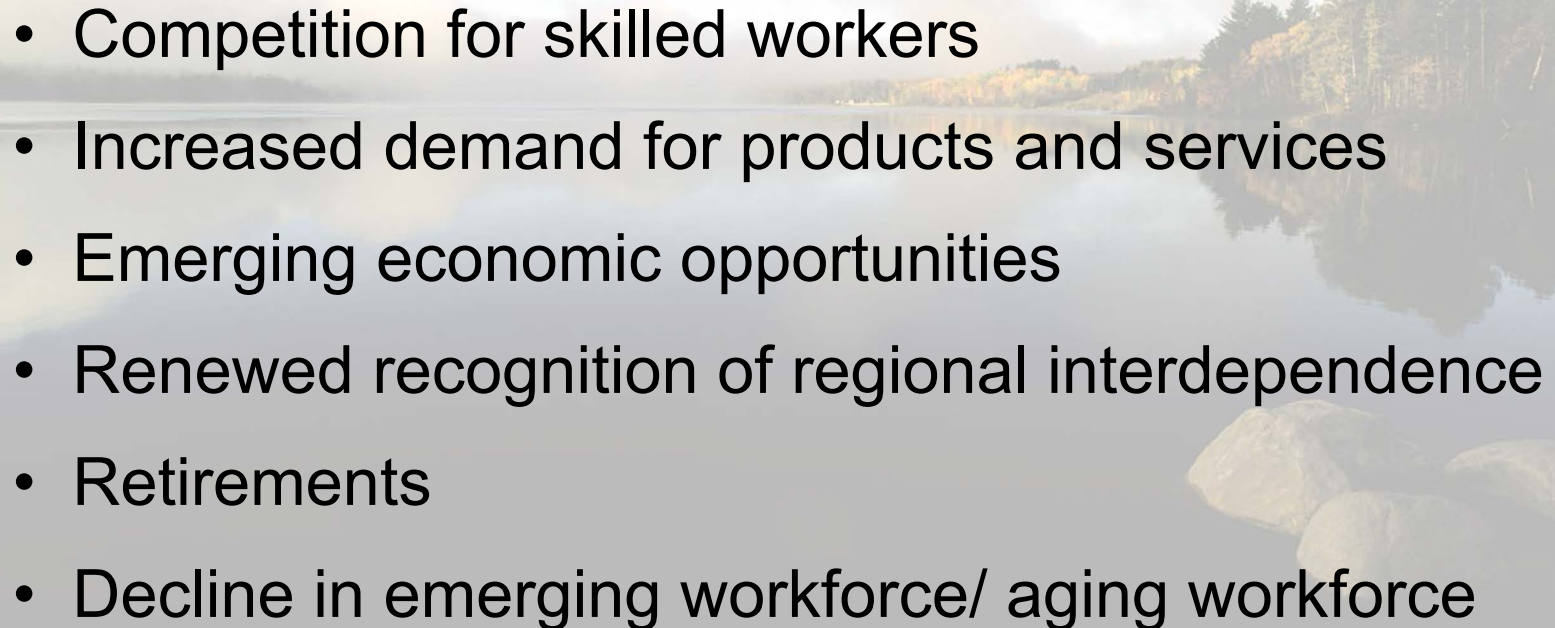


- Complement, not compete
- Build on and add value to work of others
- Seek and advance new approaches on a regional scale
- Spread impact of successful, evidence-based policy and practice
- Strengthen regional collaboration and identity

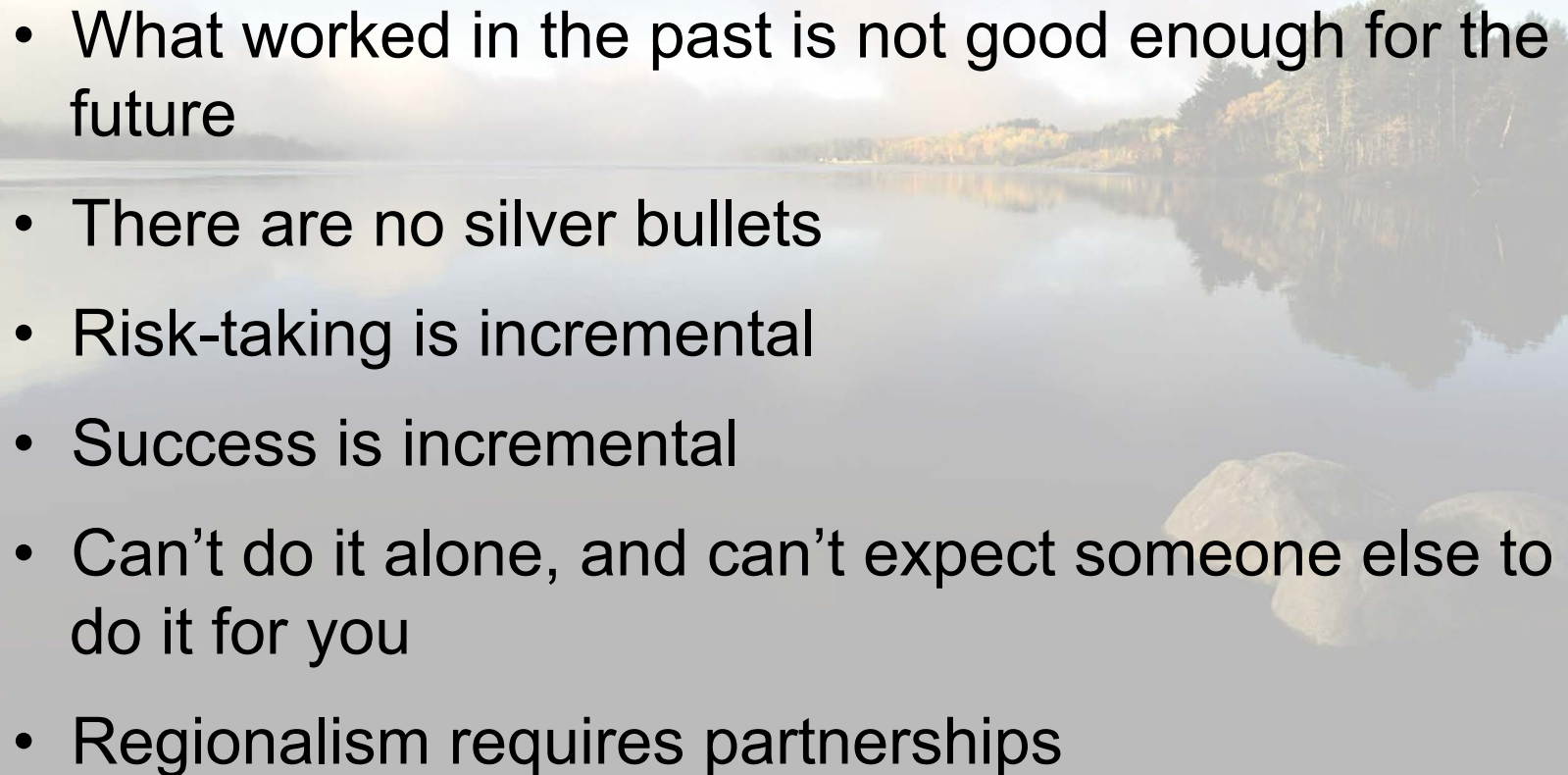
The New Geography of Minnesota



Why now?

- 
- Competition for skilled workers
 - Increased demand for products and services
 - Emerging economic opportunities
 - Renewed recognition of regional interdependence
 - Retirements
 - Decline in emerging workforce/ aging workforce

Because Rural Matters

- 
- What worked in the past is not good enough for the future
 - There are no silver bullets
 - Risk-taking is incremental
 - Success is incremental
 - Can't do it alone, and can't expect someone else to do it for you
 - Regionalism requires partnerships

*“What lies behind us,
and what lies before us
are tiny matters
compared to
what lies within us.”*

- Ralph Waldo Emerson



United States Department of Agriculture

Rural Development

Thank you!

Colleen Landkamer

State Director

USDA Rural Development